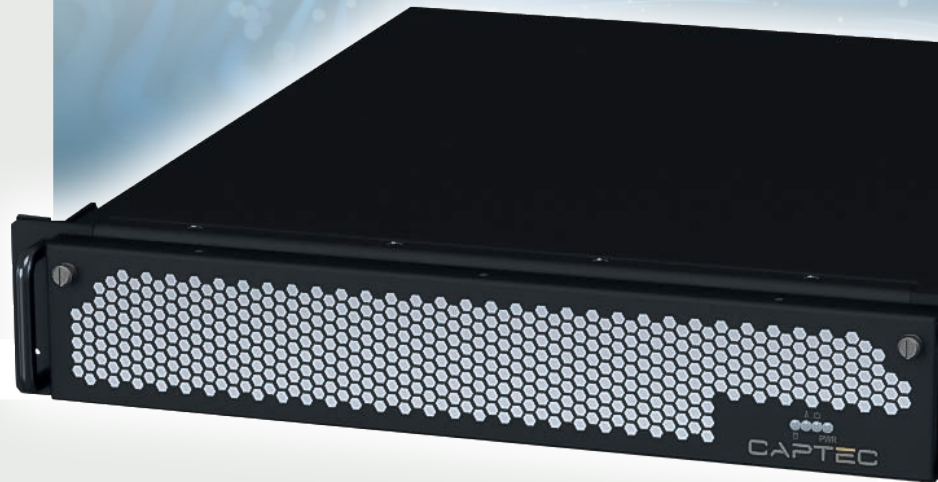


SRS-01

2U High Performance Rugged Server

Key Benefits

- ▶ Tough, lightweight aluminium chassis designed to meet to MIL-STD-810H and DO-160G shock and vibration standards for use in challenging environments
- ▶ High performance 5th Generation Intel® Xeon®, Intel® Core™ and AMD EPYC™ processor options
- ▶ Rear panel offering a variety of military connectors, fully configurable to customer specification
- ▶ Extensive removable solid state NVMe storage for high capacity rugged applications
- ▶ AC or DC power supply options to suit a wide range of deployments
- ▶ Long life, embedded processor options for extended through-life support

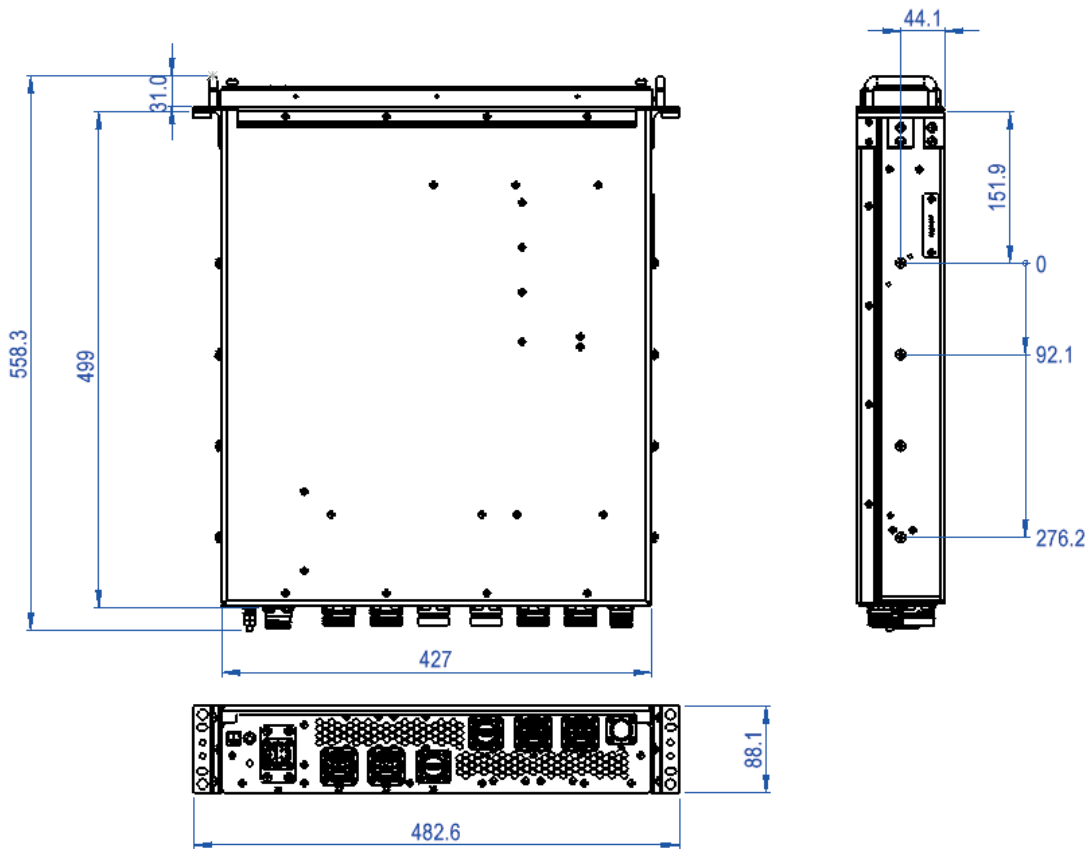


Overview

The Captec SRS-01 Rugged Server offers high processing performance in a short depth 19" rackmount form factor. Featuring expansion to enable a range of additional connectivity such as secure fibre interfaces are available up to 100Gb/s, giving high bandwidth for connecting data around the wider system. Enhanced EMI filtering combined with a rugged aluminium chassis provides a low EMI signature, suitable for use in TEMPEST environments. Captec Rugged Servers are designed, built, and formally qualified to meet your exact specification requirements and required military standards, some of which may include MIL-STD-810H, MIL-STD-461G and DO-160G, for use in challenging defense applications.

Specifications

SRS-01	A typical configuration could consist of:	SRS-01	Continued:
CPU	5th Generation Intel - Intel® Xeon® Silver 4516Y+, 24 Core (2.2/3.7GHz), 45MB Cache	Operating System	Windows / Linux
Chipset	Intel® C741	Power Consumption	<700W Max
Memory	Up to 2TB 3DS ECC RDIMM	Input Voltage	18 ~ 60V DC (depending on configuration) Optional 100-240V AC
Storage (External)	1 x 2.5" or 2 x 2.5" Removable SSD (In a bank of 8 bays for the system) 1 x M.2 NVMe	Width / Mounting	19" Rackmount
Storage (Internal)	Upto 2 x NVMe drives (M.2 PCIe 5.0)	Height	2U
Expansions Slots	2 x PCIe 5.0 x16 (1 x used by 4 x 1Gb Fibre NIC)	Depth	499mm (from rear of mounting ears, not including rear connectors)
Graphics	(1 x used by 4 x 1Gb Fibre NIC)	Dimensions	88.1 x 482.6 x 499 mm (H x W x D)
LAN	4 x 10Gb Fibre (LC / MIL-STD 38999)	Weight	Approx 15Kg (depending on configuration)
Service Port	MIL-DTL 38999 containing: 1 x VGA, 1 x IPMI & 2 x USB 2.0	Operating Temperature	-20°C to +55°C
Video	Integrated ASPEED AST2500	Environmental	Designed to Meet: MIL-STD-461, MIL-STD-810H DO-160G
Audio	N/A		



Delivering end-to-end, like no one else.

Bring us your challenge & experience the difference.

EMEA and Group Headquarters

+44 (0) 1489 866 066
sales-emea@captec-group.com

UK Subsystems

+44 (0) 1252 512 919
sales-cse@captec-group.com

Canada Headquarters

+1 (519) 650 4000
sales-canada@captec-group.com

USA Headquarters

+1 (519) 650 4000
sales-usa@captec-group.com