

MDD4Ux4-173W

Multi LCD Monitor - Military Display Drawer

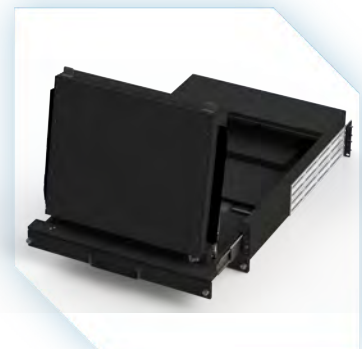


Key Benefits

- ▼ Rugged All Aluminum Construction
- ▼ Customizable Modular Design
- ▼ Integrated Keyboard Drawer
- ▼ Single Unified OSD Control
- ▼ Multiple Display Options
- ▼ Protective Cage Cable Guide
- ▼ Built-in Solid Bearing Slide Rails
- ▼ Adjustable / Telescoping Rear Arms
- ▼ Mounts in 19" Racks From 20-32"

The MDD4U is a rugged 4U 20 or 24" depth multi-head platform. This system is a complete console build that comes with a built-in keyboard and optional KVM switches. These units are available in both 3U or 4U rack heights with two, three, or four displays (depending on size and configuration).

This platform allows for a higher degree of customization by providing more room for alternate controllers / inputs or custom electronics. With it's gas shock stabilizers, telescoping arms, friction slides, and modular design, the MDD4U is ready for mobile or transit case applications.

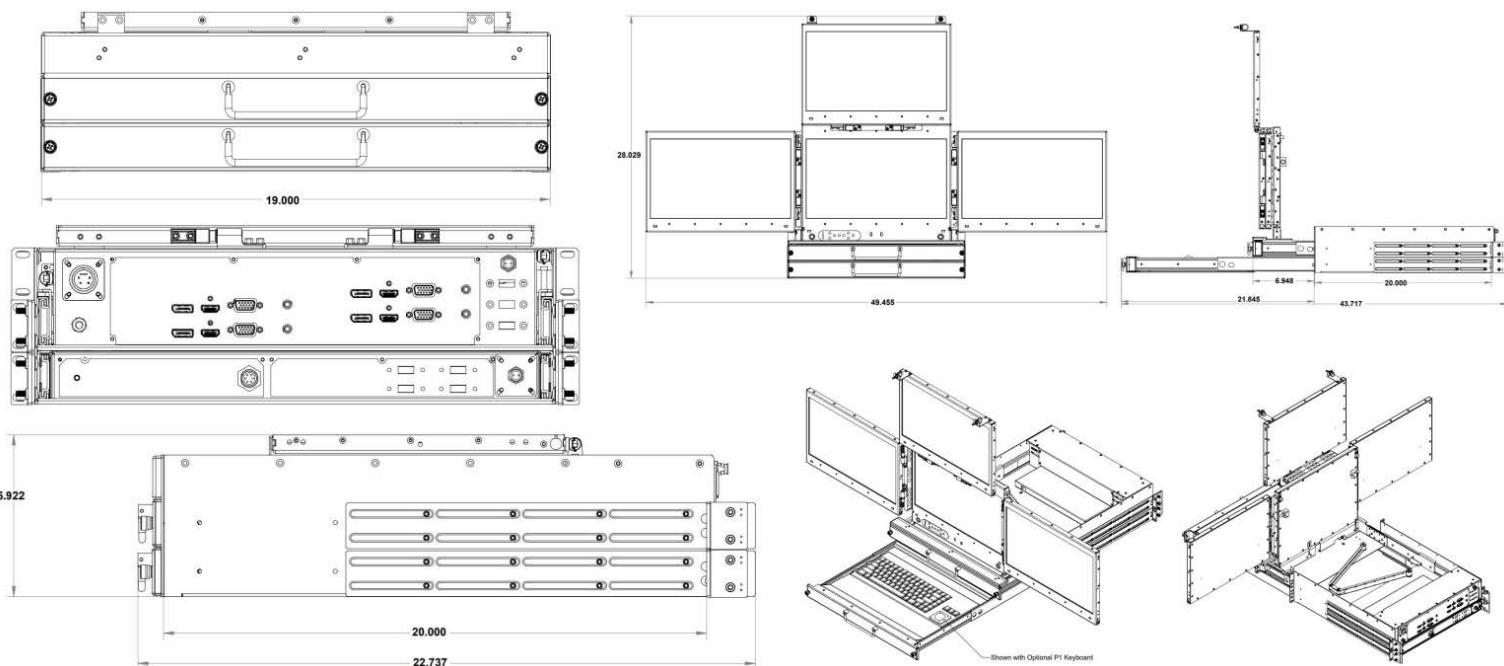


Specifications

MDD4Ux4 LCD Monitor - Military Display Drawer	
LCD Options	173W FHD 1920x1080 (Max Res) • LED Back Light • Viewing Angles: 80/80/60/80 • Contrast Ratio: 1000:1 • Brightness: 400 NITS • Response Time: 10ms
	173HB FHD 1920x1080 (Max Res) • LED Back Light • Viewing Angles: 80/80/60/80 • Contrast Ratio: 1000:1 • Brightness: 1000 NITS • Response Time: 10ms
	173M FHD 1920x1080 (Max Res) • LED Back Light • Viewing Angles: 80/80/60/80 • Contrast Ratio: 1000:1 • Brightness: 400 NITS • Response Time: 10ms • Optical Bond, ITO 5 OMH, 3mm Lens Standard
Front Face Options	• D8: Thumbscrew with Collapsible Handle • Da7: Thumbscrew w/ Flush Collapsible Handle & Speakers Additional Front Face Options Available

MDD4Ux4 LCD Monitor - Military Display Drawer	
Video Controllers	V33xA Controller • Max Resolution: 1920 x 1200 • Designed to meet Shock and Vibration requirements • Inputs Available: VGA, HDMI, Displayport, Audio
	V23xA Controller • Max Resolution: 1920 x 1200 • Inputs Available: VGA, HDMI, DVI, Optional YPbPr, and Audio, Single or Dual Channel 3G HD/SDI
	V23xM Controller MIL-Spec • Max Resolution: 1920 x 1200 • Inputs Available: VGA, HDMI, DVI, Optional YPbPr, and Audio, Single or Dual Channel 3G HD/SDI • Military Grade / Conformally Coated • Designed to meet Shock and Vibration requirements
Additional Controller Options Available	
Dimensions	7" (4U) x 19"W x 20"D
Weight	45 lbs, 20.41 kgs
Power Consumption	75W
Certification	Designed and manufactured to meet MIL-STD's

Technical Details



www.captotecamericas.com



[/company/captotec-americas-inc.](https://www.linkedin.com/company/captotec-americas-inc.)



sales@captotecamericas.com

CAPTEC USA

220 S. Marina Street.
Prescott, Arizona, 86303

+1 (520) 240-0068

CAPTEC Americas Inc.

15 Saltsman Drive. Cambridge,
Ontario, N3H 4R7, Canada

+1 (519) 650-4000

