

MSM-1U19

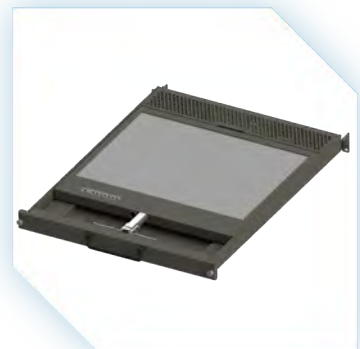
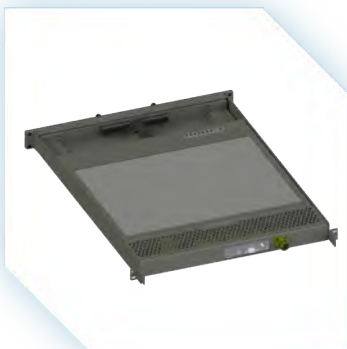
High Performance LCD Display Drawer



Key Benefits

- ▼ Rugged All Aluminum Construction
- ▼ Customizable Modular Design
- ▼ Transit Case Ready
- ▼ Pivoting Display Drawer
- ▼ Integrated Mil Spec Friction Rails
- ▼ Integrated Cable Guide System
- ▼ Custom 1/2U Reverse L Bracket
- ▼ Heavy Duty Torque Hinge
- ▼ Held Closed By Key Cam Lock or Thumb Screws

The MSM Series is a high performance 1U 19" LCD display drawer. It offers monitors with high contrast ratios and wide viewing angles. The display is held open with a proprietary 60 lb pivoting heavy-duty torque hinge, giving it a range of motion from 0 - 120 Degs from closed. The display pivots up to 90 Degs along the monitors center axis. This gives the user multi-access viewing, allowing the MSM-1U19 to be adjusted to almost any position.

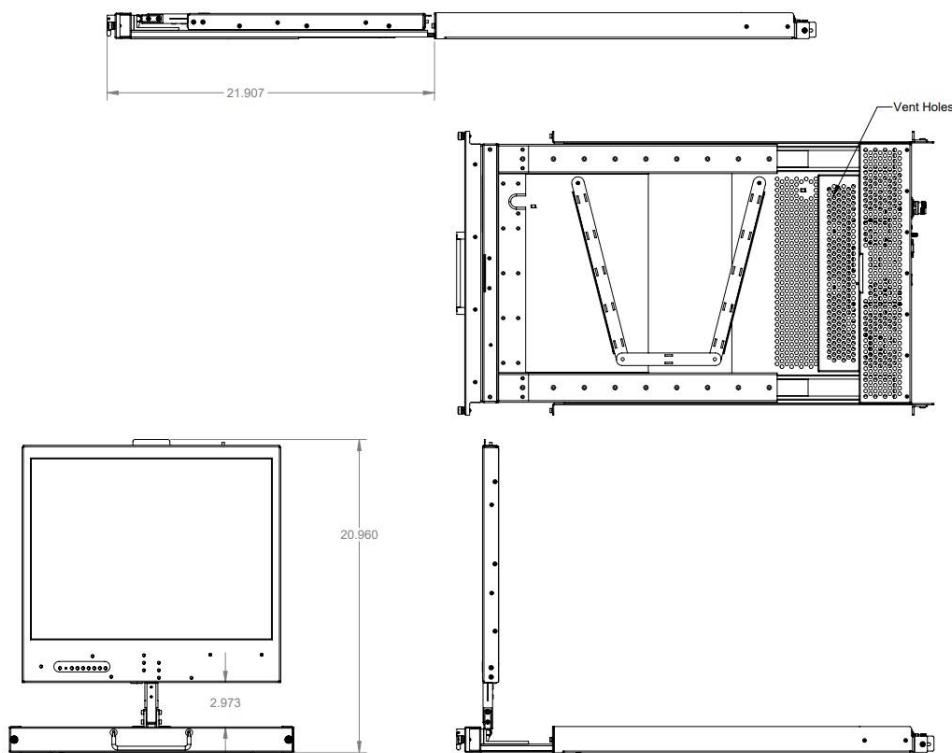


Specifications

| MSM-1U19 | High Performance LCD Display Drawer |
|--------------------|---|
| LCD Details | <p>20L UXGA 1600 x 1200 (Max Res)</p> <ul style="list-style-type: none"> • 20.1" LED Backlit LCD w/ Anti-Glare • Viewing Angles: 85/85/85/85 • Contrast Ratio: 1400:1 • Brightness: 260 NITS • Response Time: 15ms |
| Front Face Options | <ul style="list-style-type: none"> • Da8: Thumbscrew with 5" Collapsible Handle • Da7: Thumbscrew w/ Flush Collapsible Handle & Speakers • Da6: Thumbscrew w/ 7.5" Pull Handle & Speakers <p>Additional Front Face Options Available</p> |
| Operational Temp | 0-50°C |
| Storage Temp | -25-60°C |

| MSM-1U19 | High Performance LCD Display Drawer |
|-------------------|--|
| Video Controllers | <p>V23Mx Mil Spec</p> <ul style="list-style-type: none"> • Max Resolution: 1920 x 1200 • Input Options Available: VGA, DVI, HDMI • Optional: SDI, Audio, YPbPr |
| | <p>V25X Embedded Controller</p> <ul style="list-style-type: none"> • Max Resolution: 1920 x 1200 • Input Options Available: VGA, DVI, • Audio: Optional |
| | <p>V33X Embedded Controller</p> <ul style="list-style-type: none"> • Max Resolution: 1920 x 1200 • Input Options Available: VGA, Display Port, HDMI |
| | <p>Additional Controller Options Available</p> |
| Dimensions | 1.75" x 19"W x 24"D |
| Weight | 35 lbs, 15.88 kgs |
| Power Consumption | 50W |
| Certification | Designed and manufactured to meet MIL-STD's |

Technical Details



www.captecameras.com



[/company/captec-americas-inc.](https://www.linkedin.com/company/captec-americas-inc.)



sales@captecameras.com

CAPTEC USA

220 S. Marina Street.
Prescott, Arizona, 86303

▼ +1 (520) 240-0068

CAPTEC Americas Inc.

15 Saltsman Drive. Cambridge,
Ontario, N3H 4R7, Canada

▼ +1 (519) 650-4000

