

# MPM32

## Military Panel Mount

### Key Benefits

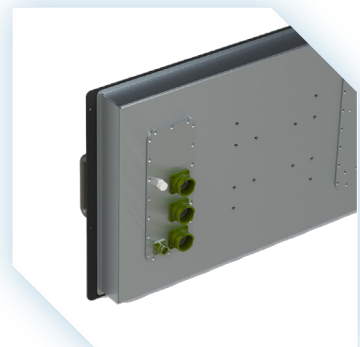
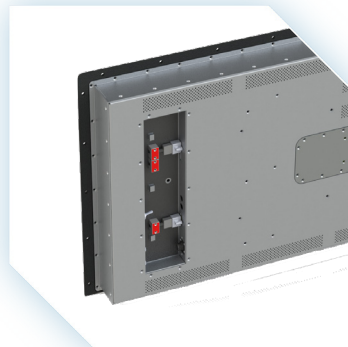
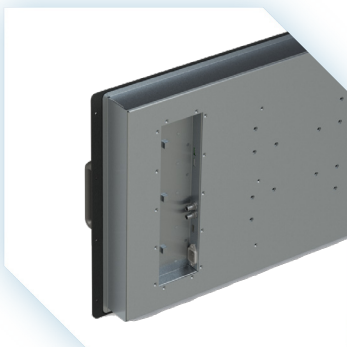
- ▼ Welded & Milled Aluminum Housing
- ▼ IP67 Mil Spec I/O Plate
- ▼ 6061 T6 Milled Aluminum Front Face
- ▼ Multiple Touch Screen Options Available
- ▼ Passive Cooling
- ▼ Multiple Controller Card Options
- ▼ VESA Hole Positions
- ▼ Panel Mount Hole Pattern
- ▼ Water Tight OSD Menu Membrane Switches



Our Military Monitor MPM32 Series was designed to meet rugged environmental requirements. The displays can either be mounted vertically in a 19" rack or horizontally with a VESA mount. It incorporates single or picture in picture capability.

It is Designed To Meet (DTM) many MIL Spec standards as an off the shelf product. Our designs are commercial off the shelf that can be modified.

Exacting precision has gone into every design feature of this unit to make it one of the best monitors in the industry, and worthy of becoming a true Military Monitor.

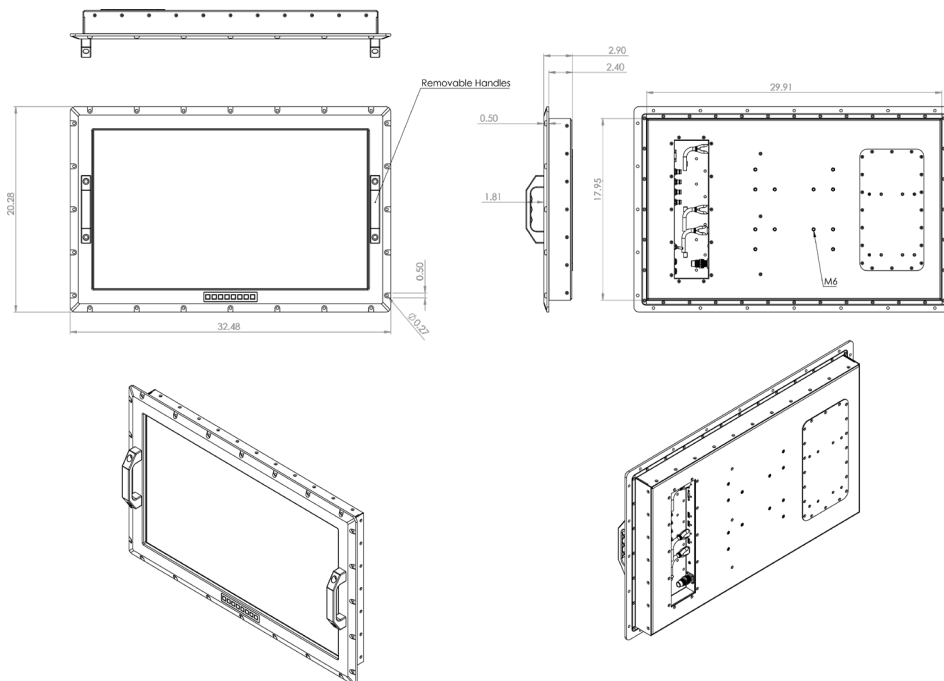


## Specifications

MPM32	Military Panel Mount
LCD Modules	<ul style="list-style-type: none"> <li>• UHD 3840X2160 ( Max Res )</li> <li>• 32" LED Backlit LCD</li> <li>• ITO EMI Lens Enhancement</li> <li>• Viewing Angles: 89L/89R/89U/89D</li> <li>• Contrast Ratio: 3000:1</li> <li>• Brightness: <b>320M1/320M3</b>: 400 NITS <b>320M2</b>: 1000 NITS High Bright</li> <li>• Response Time: 15/5ms</li> <li>• Surface Finish: <b>320M1</b> : AR/AG Coated Laminated Front Lens <b>320M2</b> : AR/AG Coated Laminated 4mm Optically Bonded Lens <b>320M3</b> : AR/AG Optically Bonded Lens</li> <li>• Color: 1.08B, 10 Bit</li> <li>• Color Gamut: <b>320M1/320M2</b>: 97% NTSC <b>320M3</b>: TBD NTSC</li> </ul>
I/O	<ul style="list-style-type: none"> <li>• <b>VGA</b>      • <b>YPbPr</b>      • <b>SDI</b></li> <li>• <b>DVI</b>      • <b>Composite</b>   • <b>Display Port</b></li> <li>• <b>HDMI</b>    • <b>S-Video</b></li> </ul> <p>*Not all ports are available on all AD cards. Check I/O for each Video Controller Offered</p>

MPM32	Military Panel Mount
Controllers	<p><b>V38x High End 4K Controller (Production)</b></p> <ul style="list-style-type: none"> <li>• Max Resolution: 4096 x 2160 60Hz</li> <li>• Input Options Available: HDMI 2.0 x1, HDMI1.4 x3, Display Port 1.2. RS-232, OSD, For comand and Control, and IR Remote. Integradeted Multi View (PIP, PBP, Quad View).</li> <li>• Optional 3G or 6G SDI Interface can be Integrated</li> </ul> <p><b>V36x Mid Grade 4K Controller (New)</b></p> <ul style="list-style-type: none"> <li>• Max Resolution: 4096x2160 60Hz</li> <li>• Input Options Available: HDMI 2.0 x2, Display Port 1.2 x1, RS-232 and OSD for Comand and Control. IR Remote</li> </ul>
Dimensions	20.28" x 32.48" x 2.9"
Weight	~85 lbs, ~38.65 kgs
Power Consumption	~130 Watts
Certification	Designed and manufactured to meet MIL-STD's

## Technical Details



[www.captecameras.com](http://www.captecameras.com)



[/company/captec-americas-inc.](https://www.linkedin.com/company/captec-americas-inc.)



[sales@captecameras.com](mailto:sales@captecameras.com)

### CAPTEC USA

220 S. Marina Street.  
Prescott, Arizona, 86303

▼ +1 (520) 240-0068

### CAPTEC Americas Inc.

15 Saltsman Drive. Cambridge,  
Ontario, N3H 4R7, Canada

▼ +1 (519) 650-4000

