

MDD1U-20

Low profile 1U Clamshell LCD Monitor and Keyboard

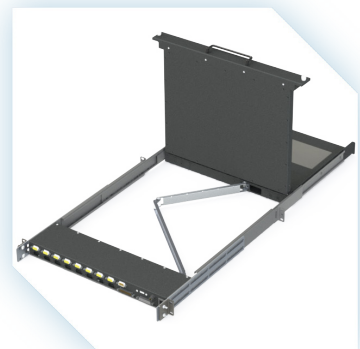
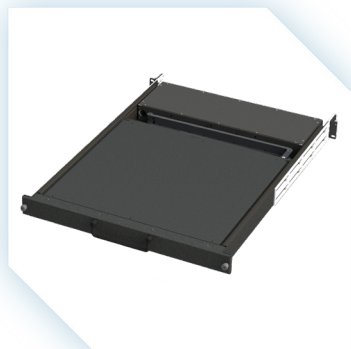


Key Benefits

- ▶ Rugged Folding Clamshell Design
- ▶ Light Weight Aluminum Construction
- ▶ Flexible Keyboard & Pointer Options
- ▶ Integrated Cable Management
- ▶ Mounts in Standard 19" Rack
- ▶ Fits Cabinets Depths from 20" - 28"
- ▶ Built-in Slide Rails w/Telescoping Arms

The MDD1U-20 is a low profile 1U Clamshell, Rack Drawer, LCD Monitor and Keyboard combination with a Depth of 20 Inches. This Rack Drawer fits a standard 19" Rack or Transit Case with Depth of 20" to 28". It offers entry level KVM (Keyboard/Video/Mouse) switch functionality.

The MDD1U Drawer is available with 17", 19", and 20.1" LCD Monitors.

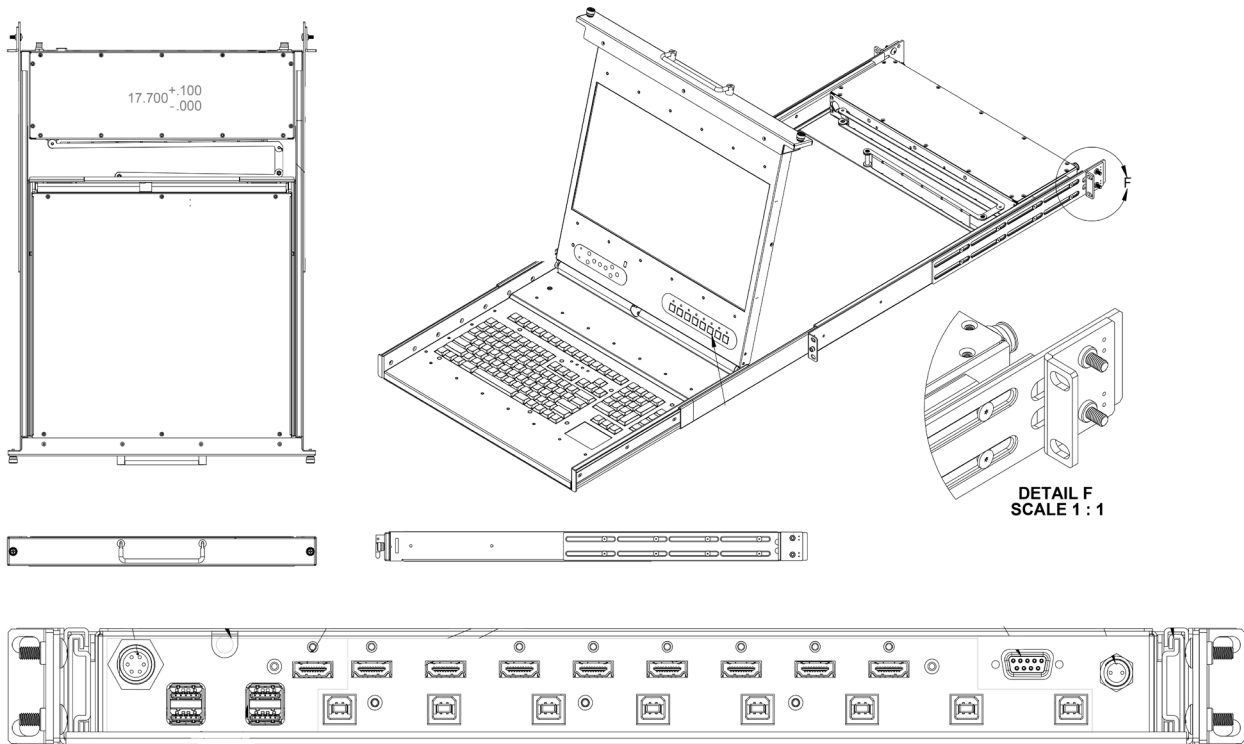


Specifications

MDD1U-20	LCD Monitor and Keyboard
Display	15L: XGA 1024 x768, 400 NITS, LED 17L: SXGA 1280 x 1024, 350 NITS, LED 173W : FHD 1920 x 1080, 400 NITS, LED 173W : FHD 1920 x 1080, 1000 NITS, LED Additional Panel Options Available
I/O	Ex: Legacy VGA KVM Switches Gx: DVI-D KVM Switches Ox: HDMI KVM Switches Over 10+ KVM Options Available Both Commercial and MIL Standard Connectors Available
Controllers	V35X Embedded Controller Max Resolution: 1920X1200 Input Option Available: VGA, DVI, DP Audio: Optional Over 10+ Controller Options Available

MDD1U-20	LCD Monitor and Keyboard
Front Faces	E8: Thumbscrew with 5" Collapsible Handle Ea6: Thumbscrew 7.5" Pull Handle w/Audio Additional Front Face Options Available
CAT20 SERIES	Cage Style Cable Guide Transit Case Arms Mil Grade Friction Slides E8 Front Face
Dimensions	1.75"(1U) x 19"W x 20"D
Weight	27 lbs, 12.25 kgs
Certification	Designed and manufactured to meet MIL-STD's

Technical Details



www.captecameras.com



[/company/captec-americas-inc.](https://www.linkedin.com/company/captec-americas-inc.)



sales@captecameras.com

CAPTEC USA

220 S. Marina Street.
Prescott, Arizona, 86303

▼ +1 (520) 240-0068

CAPTEC Americas Inc.

15 Saltsman Drive. Cambridge,
Ontario, N3H 4R7, Canada

▼ +1 (519) 650-4000

